



Danos

INTERNATIONAL PROPERTY
CONSULTANTS & VALUERS

An alliance member of
 BNP PARIBAS
REAL ESTATE

DANOS | An alliance member of BNP PARIBAS Real Estate offer



BUSINESS AND WAREHOUSE COMPLEX

BELGRADE, SERBIA

An alliance member of



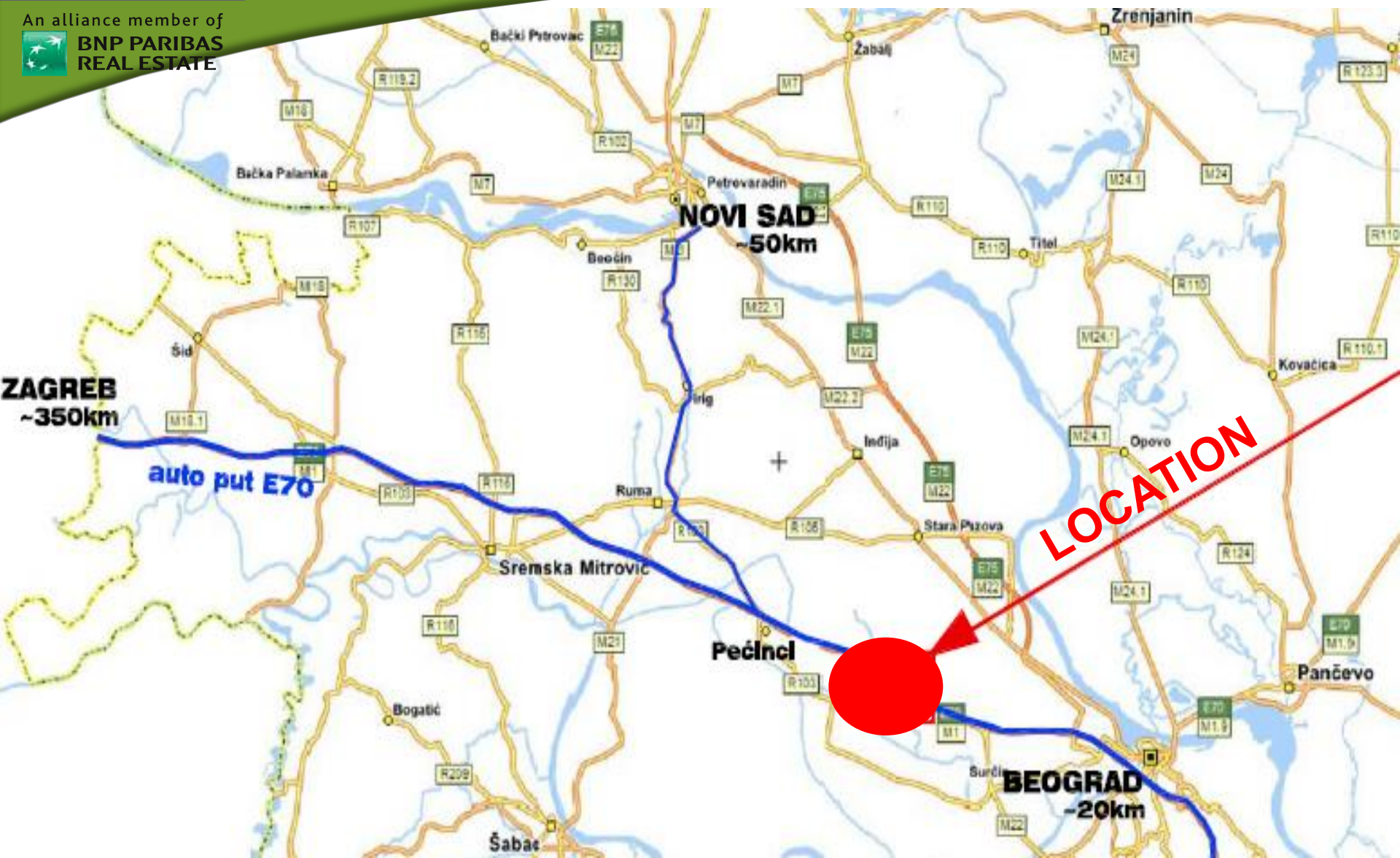
**BNP PARIBAS
REAL ESTATE**



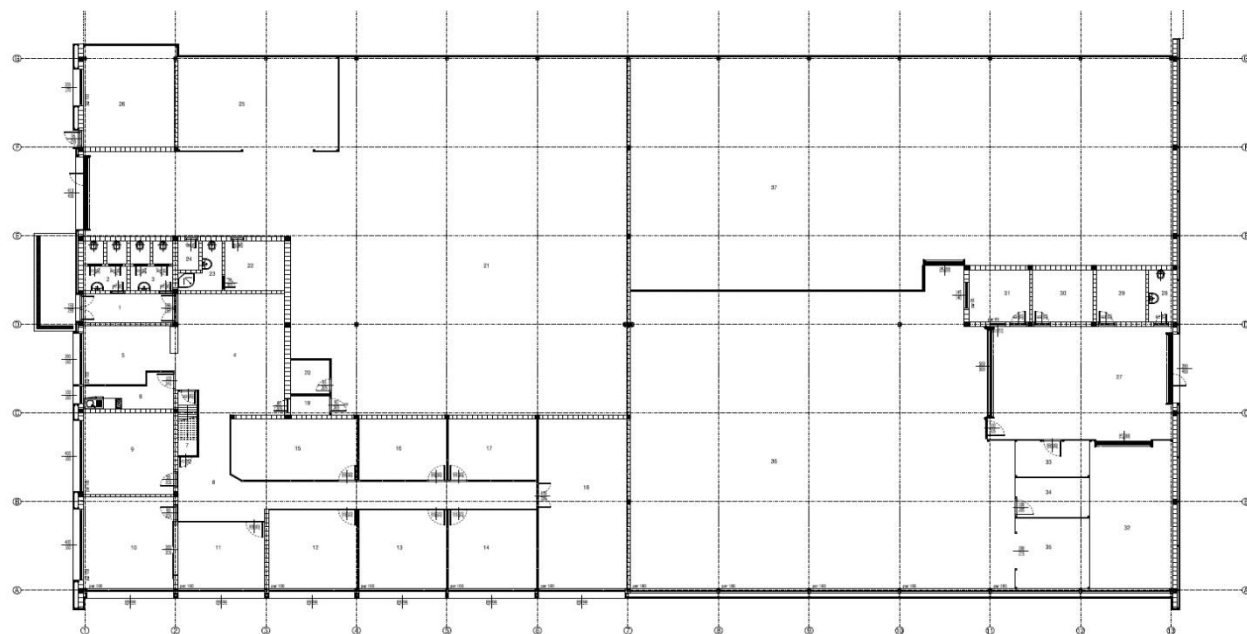
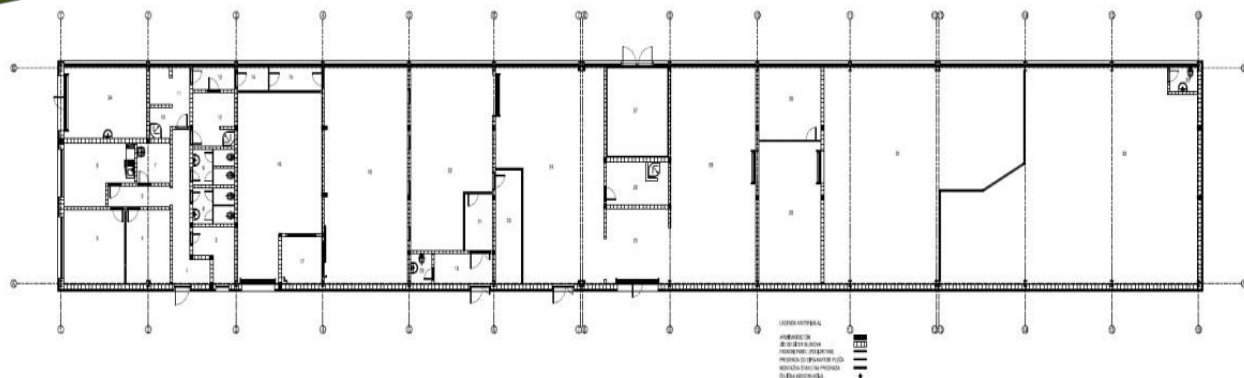
BASIC INFORMATION

Location:	Belgrade, Serbia
Size:	2.976 sq m warehouse 14.528 sq m land
Description:	<p>Business and warehouse complex is located near the highway E – 75, 20 km from Belgrade. It has great visibility and direct access to the road connected to highway. Location within highly prosperous industrial zone, together with many acclaimed international companies.</p> <p>There are 2.976 sq. m business and warehouse space divided in two buildings and 14.528 sq m land with possibility for building more additional space.</p> <p>With all infrastructure on site, TNG gas station, substation 630KW, two wells for water, fire system, video monitoring, air condition.</p> <p>In excellent condition.</p>
Price:	Upon request

MACROLOCATION



LAYOUT



PHOTOS



PHOTOS





Danos

INTERNATIONAL PROPERTY
CONSULTANTS & VALUERS

An alliance member of



**BNP PARIBAS
REAL ESTATE**

CONTACT US FOR MORE INFORMATION:

KONTAKTIRAJTE NAS ZA VIŠE INFORMACIJA:

Tel: 011/2600-603

www.danos.rs

office@danos.rs



Danos

INTERNATIONAL PROPERTY
CONSULTANTS & VALUERS

An alliance member of



**BNP PARIBAS
REAL ESTATE**